



RECRUIT . RETAIN . GROW .

SOUTHERN UNIVERSITY AND A&M COLLEGE

***Strengthen your organization's
brand awareness and talent pipeline!***

Become an **ACE SPONSOR today!**



PARTNER AND CORPORATE SPONSORSHIP PACKET



ABOUT THE AGRICULTURAL CAREER EXPO

RECRUIT . RETAIN . GROW .

The mission of the Agricultural Career Expo (ACE) is to increase student placement and internships through the cultivation of partnerships with federal, non-profit, state, and private entities seeking a diverse pool of emerging talent in Agriculture and related fields. The Southern University College of Agricultural, Family and Consumer Sciences is home to four departments consisting of: Agricultural Sciences, Family and Consumer Sciences, Urban Forestry and Natural Resources, and Environmental Toxicology. The College of Agricultural, Family and Consumer Sciences offers 17 concentrations. At A.C.E., recruiters are encouraged to utilize the expo floor for demonstrations (Agricultural Tech, Engineering, Precision Agriculture, etc.). **Registration Cost: \$100**

BECOME A CORPORATE SPONSOR

Showcase your brand and engage with students interested in pursuing careers in Agriculture, Natural Resource, Human and Food Sciences, and related fields. Your support will help us provide an informative and engaging event for students and alumni looking to jumpstart their careers. Investing in our Corporate Partners program will be leveraged as a catalyst in furthering your mission to Diversity recruitment and Corporate Relations mission.

PARTNER AND CORPORATE SPONSOR BENEFITS:

- ✓ Prominent brand awareness and marketing materials
- ✓ preferred placement at campus events
- ✓ signage
- ✓ social media promotion

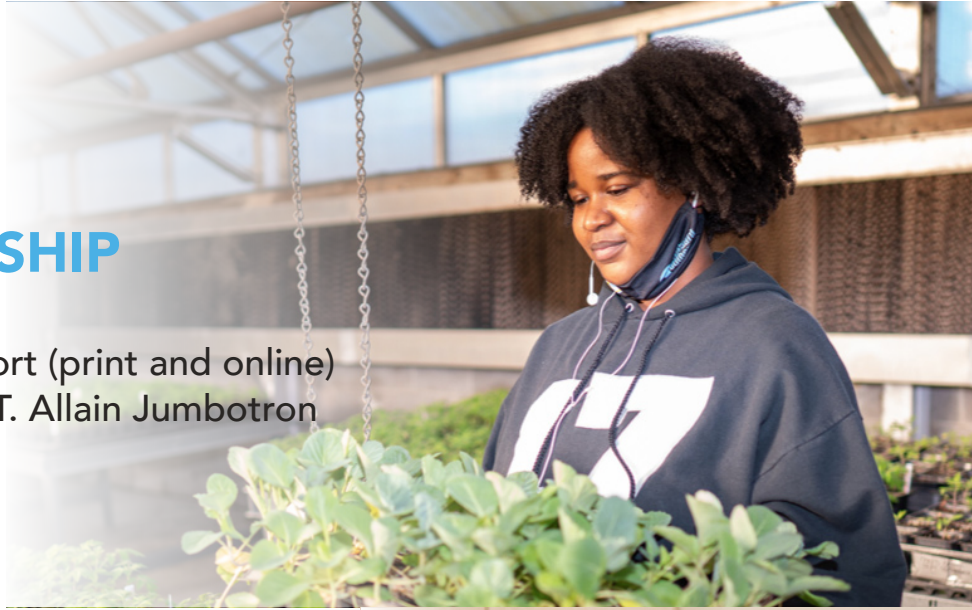
ACE PAST SPONSORS HAVE INCLUDED:



GROW jAGs SPONSORSHIP

Planting a seed of \$1,000 includes:

Branding/logo in Donor Annual Report (print and online)
Recognition on Harding Blvd. and T.T. Allain Jumbotron
Preferred placement on Expo Floor
Event Recognition on Expo floor
Social Media and website Promotion



JAGS IN AG SPONSORSHIP

Planting a seed of \$2,500 includes Grow jAGs benefits plus:

Networking mixer following the Career Expo
Annual Newsletter



ACE SPONSORSHIP

Exclusive Opportunity!

Planting a seed of \$5,000 includes all Grow jAGs and Jags in Ag benefits plus:

A presenting sponsorship of the Agricultural Career Expo in partnership with Corporate Foundation and Relations
Full-page advertisement in the donor annual report
Opportunity for Capacity Building Day
Networking Mixer Sponsor



SCAN THE QR CODE BELOW TO BECOME A SPONSOR

<https://foundation.sus.edu/ace/>



RECRUIT . RETAIN . GROW .

SOUTHERN UNIVERSITY AND A&M COLLEGE

FOR MORE INFORMATION, PLEASE CONTACT:

Robert Easy Jr.

Director of Advancement, Southern University
Agricultural Research and Extension Center
College of Agricultural Family and Consumer Sciences
Phone: (225) 771-3907 Mobile: (504) 373-7264

Harold I. Mellieon Jr., PhD.

Department Chair, Department of Agricultural Sciences
Assistant Professor, Agricultural Science
Program Leader, Animal Science
College of Agricultural, Family and Consumer Sciences
Southern University and A&M